

IT SOLUTIONS portfolio

Clients Worldwide

More than 2000 Clients in Europe, Africa and Middle East



Recent Clients in Zambia

RTSA, Rankin Engineering, ZRL, PHARMEX, REGUS, ZAMREN

ABOUT US

Being incorporated on 2013 in Lusaka, Zambia, InfoSense Ltd. serves customers and partners in the region of Sub-Saharan Africa with ICT Solutions and innovative systems.

With an extensive solutions' portfolio from partnerships of major European and American ICT vendors, Infosense is offering tailor-made solutions based on the composition of best-of-breed software and hardware complimented by local services provided by professional engineers and specialists.

With numerous case studies and extensive technical capability in implementing, supporting and administrating ICT projects and software solutions in SE Europe, Infosense's offerings, extend to several industries in the public and private sectors.

Infosense Ltd. is funded by a European Funding Organization – PROMITHEAS S.A.. located in Brussels, and has inherited the technological expertise and partnerships of Data Concept Group, a leader in SE Europe.

InfoSense Ltd

Zambia



Innovative IT Solutions based on best-of-breed selection of hardware and software products



Implementation, Outsourcing, Consulting, Support and Training Services



Wide array of international partnerships from recognized software and hardware vendors



www.InfoSenseLtd.com

RESELLERS	SOFTWARE APPS	SYSTEMS	HARDWARE	SERVICES	INDUSTRIES
					
▼	▼	▼	▼	▼	▼
Microsoft	Business Intel.	IP PBX	Data Centre	IT Consulting	Banking
Autodesk	ERP	Fleet Mgt.	Surveillance	Implementation	Telcos
Intergraph	CRM	Real Time Loc.	Biometrics	Training	Insurances
ZOHO Apps	Asset Mgt.	Digital Signage	H/W Infra	Support	Manufacturing
GO!Enterprise	Document Mgt.	Digital Boards		Online Marketing	Retailers
Qlikview	Content Mgt.	SMS Gateways		Digitization	Transportation
Softone	Live helpdesk	Building Energy		MS Programming	Government
	Project Mgt.			Mobile Apps	Engineering
					Mining
					Health
					Public Utilities
					SMBs

For more information on products & services, please contact:



Infosense Ltd

IT Solutions and Services



+260 211 372723



contact@infosenseltd.com



<https://www.linkedin.com/company/infosense-ltd>



www.infosenseltd.blogspot.com

www.infosenseltd.com

RESELLERS



RESELLERS



Microsoft



Autodesk



Intergraph



ZOHO Apps



GO!Enterprise

Qlikview

Softone



We supply licenses for MS Office, MS SQL server, MS Navision (Dynamics) and Azure.



All Industries



Training-Support-Programming



Autodesk is a world leader in 3D design software for natural resources, manufacturing, engineering, and construction.



Manufacturing-Engineering-Transportation



Training & Support



Intergraph is the world's leading provider of enterprise geospatial software solutions.



Public Utilities-Engineering-GOV-Telcos



Training-Support-Implementation



Zoho offers a suite of online web applications geared towards increasing your productivity and offering easy collaboration.



All Industries



Training-Support-Implementation

RESELLERS



Microsoft

Autodesk

Intergraph

Zoho Apps

GO!Enterprise >

Qlikview >

Softone >



GO!Enterprise is the perfect platform for development, deployment and management of secure mobile apps.



All Industries



Training-Support-Implementation



Get best-in-class self-service business intelligence tools. Explore the latest data visualization and discovery tools.



All Industries



Training-Support-Implementation



SotOne ERP delivers functionality and usability to manage costs and resources. Proven by 10,000+ customers in EU countries and Zambia.



Manufacturing, Retailers, SMBs



Training-Support-Implementation

For more information on products & services, please contact:



Infosense Ltd

IT Solutions and Services



+260 211 372723



contact@infosenseltd.com



<https://www.linkedin.com/company/infosense-ltd>



www.infosenseltd.blogspot.com

www.infosenseltd.com

SOFTWARE APPS





Business Intel. ▶

ERP

CRM

Asset Mgt.

Document Mgt.

Content Mgt.

Live helpdesk

Project Mgt.



QlikView

QlikView is *the* ultimate **Business Intelligence** and Business Discovery **platform**.

Understand your business in brand new ways by:

- Consolidating relevant data from multiple sources into a single application
- Exploring the associations in your data
- Enabling social decision making through secure, real-time collaboration
- Visualizing data with engaging, state-of-the-art graphics
- Searching across all data—directly and indirectly
- Interacting with dynamic apps, dashboards and analytics
- Accessing, analyzing and capturing data from mobile devices



All Industries



Authorized Resellers



Training-Support-Implementation

We believe information can change the world and that every business user contributes to that transformation. With the QlikView Business Discovery platform, everyone can easily analyze data and experience that "a-ha" moment of discovery!



Business Intel.

ERP

CRM

Asset Mgt.

Document Mgt.

Content Mgt.

Live helpdesk

Project Mgt.



Softone ERP either on Azure Cloud or on premises, enables you to:

- Streamline operations and gain company-wide visibility.
- Get access to information anytime, anywhere to improve decision making and speed response times.
- Easily adapt to optimum operational methods, changing customer requirements, and evolving business strategies.
- Get new products/services to market more quickly and profitably.
- Optimize inventory and production resources to increase efficiency.
- Improve quality and customer satisfaction.



Manufacturing, Retailers, SMBs



Authorized Resellers



Training-Support-Implementation

Softone is the most powerful and comprehensive system available for managing company resources.. It has proven itself in a wide variety of manufacturing, wholesaling, retail, service-provisioning industries. It is the only full-featured solution that simultaneously supports cloud-based and on premises installation.



Business Intel.

ERP

CRM

Asset Mgt.

Document Mgt.

Content Mgt.

Live helpdesk

Project Mgt.



ZOHO CRM

Zoho CRM is an On-demand Customer Relationship Management (CRM) software for managing your customer relations in a better way. Zoho CRM software helps streamline your organization-wide sales, marketing, customer support, and inventory management functions in a single system.

Key Features include :

Sales Force Automation, Marketing Automation, Customer Support & Service, Inventory Management, CRM Analytics, Workflow Management, Role-based Security, Developer API for Third-party Integration, CRM with Email Integration with Microsoft Office & Outlook



All Industries



Authorized Resellers



Training-Support-Implementation

Zoho CRM is part of Zoho Office Suite. A web-based online business ecosystem of applications containing word processing, spreadsheets, presentations, databases, note-taking, wikis, customer relationship management (CRM), project management, live helpdesk, social workplace and other applications.



Business Intel.

ERP

CRM

Asset Mgt. ▶

Document Mgt.

Content Mgt.

Live helpdesk

Project Mgt.



Asset ID	Description	Location	Status	Value
1001	Asset 1	Location 1	Active	1000
1002	Asset 2	Location 2	Inactive	2000
1003	Asset 3	Location 3	Active	3000
1004	Asset 4	Location 4	Inactive	4000
1005	Asset 5	Location 5	Active	5000



Assets.Trak™ Solution is based on Softone platform. Asset.Trak™ allows you to instantly locate any asset, eliminating wasted time spent searching for missing items and unnecessary expenses to replace lost assets.

Assets.Trak™, tracking module features an easy-to-use interface, keeping the data you need at your fingertips, without unnecessary complexity.

Mobile module is available as a complete asset tracking solution including a mobile computer, for managing asset data in the field, and a barcode/RFID label printer for creating long-lasting asset tags.



All Industries



Authorized Resellers



Training-Support-Implementation

Manage a retail store, factory, warehouse or hospital, by tracking stock and controlling your mobile and fixed assets. (RFID), barcodes and GPS sensors can revolutionize specific industry associated processes, as they provide information, both qualitative and quantitative, for all assets real time, in our Assets.Trak™ solution.



Business Intel.

ERP

CRM

Asset Mgt.

Document Mgt. ▶

Content Mgt.

Live helpdesk

Project Mgt.

Records.Trak



Capture, organize, assign and associate all your incoming and outgoing documentation from multiple desks (registrars) and eliminate copies, print outs, manual storage and distribution.

Our easy-to-use electronic document distribution environment seamlessly operates with MS Office applications, MS Outlook and your mobile phone providing an integrated intranet environment for your company, hosted in your company's portal available from everywhere, anytime!

What if you could transform every document's information to corporate knowledge? Records.Trak™ is more than a document management application. Records.Trak™ is a holistic approach to paperless office



All Industries



Vendors/Manufacturers



Training-Support-Implementation-Digitization

.Records.Trak™, provides advanced solutions for records, project and quality system. Through a powerful synchronous team collaboration engine and a dynamic workflow and report generator our DMS solution helps you digitize all business processes, documents and forms, eliminating the unnecessary printing.



Business Intel.

ERP

CRM

Asset Mgt.

Document Mgt.

Content Mgt. ▶

Live helpdesk

Project Mgt.



InfoSense Ltd

Zambia

Hyper.Trak™ helps you organize and expose, securely, your company's information into a structured form, easily navigated and viewed from a unique template that best fits your company's profile. Each web page created from Hyper.Trak™ is associated to a template, designed per case and enriched with customized title, keywords and content, ready for SEO!

Hyper.Trak™ is also an electronic trade and ecommerce application that consists from a front-to-back set of tools that organize and optimize your online store in order to successfully promote and sale goods and services online..



All Industries



Vendors/Manufacturers



Training-Support-Implementation

Is your company's web portal another passive brochure? Do you feel that you cannot leverage business exposure from your website? Hyper.Trak™ is a highly productive content management application that can turn your organization digital.



Business Intel.

ERP

CRM

Asset Mgt.

Document Mgt.

Content Mgt.

Live helpdesk ▶

Project Mgt.



Zoho LiveDesk gives your customers the quick support they deserve, the tools they need to share their feedback, and even the ability to rate their agent.

Easily embed click-to-chat capability into any, and every, space where your customers search for answers about your products or services. You have customers, they have questions, Zoho LiveDesk effortlessly connects you, your customers and the support solutions they crave.

Take the integral elements of world-class customer support, scrap away the complexities, idiosyncrasies and lag of cumbersome help desk software—and voilà—Zoho LiveDesk.



All Industries



Authorized Resellers



Training-Support-Implementation

Landing a new customer is 5x more expensive than keeping an existing customer. How do we keep our customers happy? By providing outstanding support. LiveDesk let's you delivers outstanding customer service and keeps your retention rates high.



Business Intel.

ERP

CRM

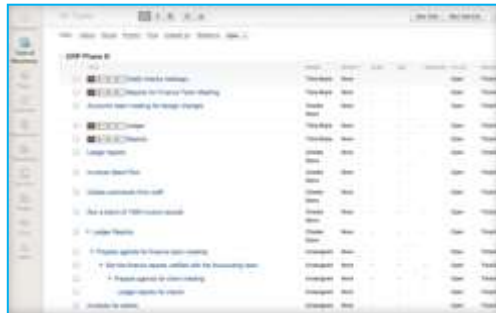
Asset Mgt.

Document Mgt.

Content Mgt.

Live helpdesk

Project Mgt. ▶



ZOHO PROJECTS

- Access all your projects anywhere and anytime using a simple web browser in a secure way
- Proper schedules, continuous uninterrupted workflow with no delays and finish projects in time
- Give a structure to how bugs are handled by defining a bug life cycle based on stages
- Create folders and organize your project files with ease just like your personal computer
- Escalate critical bugs and get immediate solution from experts in the team with project forums
- Facilitate communication between people and enhance knowledge sharing among team members



All Industries



Authorized Resellers



Training-Support-Implementation

Zoho Projects is a feature-rich project management tool with collaboration that allows teams to collaborate and get work done faster. Planning and Tracking helps you keep your project on schedule. Collaboration helps improve the communication within the team and keeps everyone on the same page.

For more information on products & services, please contact:



Infosense Ltd

IT Solutions and Services



+260 211 372723



contact@infosenseltd.com



<https://www.linkedin.com/company/infosense-ltd>



www.infosenseltd.blogspot.com

www.infosenseltd.com

SYSTEMS





IP PBX

Fleet Mgt.

Real Time Loc.

Digital Signage

Digital Boards

SMS Gateways

Building Energy



Alcatel·Lucent

Instead of complex networks and fragile systems, we're all about simplicity; enabling the meaningful conversations, connections and services that truly help the workers in your enterprise.

- Wireline/wireless phones and efficient desktop to increase productivity
- Customer welcome to provide a professional greeting and increase customer satisfaction
- Teamwork and collaboration to help teams work together
- Enhanced off-site mobility to keep users connected to their business anytime, anywhere
- Network infrastructure that offers cost savings using a single infrastructure for voice and data services



All Industries



Authorized Resellers



Training-Support-Implementation

Alcatel-Lucent is at the forefront of global communications, providing products and innovations in IP and cloud networking, as well as ultra-broadband fixed and wireless access, to service providers, enterprises and institutions throughout the world.



IP PBX

Fleet Mgt. ▶

Real Time Loc.

Digital Signage

Digital Boards

SMS Gateways

Building Energy

3dtracking



3dtracking uses leading GPS and SIM card technology installed in your vehicle to provide you with a range of features and functions. From basic, real-time monitoring to highly complex fleet management systems, we are able to meet your needs on every level:

- 3dTrack - Live tracking and monitoring
- 3dHistory - Historic playback of any past movement or activity
- 3dReport - Over 30 reports to detail each aspect of vehicle activity
- 3dAlert - Over 20 real-time warnings to highlight any significant or unauthorized activity
- 3dOrder - Monitoring of driver and/or vehicle schedules
- 3dCommunicate - In-vehicle satellite navigation and two-way driver/office messaging
- 3dFuel - Fuel monitoring and analysis



All Industries



Authorized Resellers



Training-Support-Implementation

It's simply a matter of saving you money and squeezing the most out of your fleet. Ever-escalating costs of fuel, driver-overtime, insurance and vehicle maintenance means that now more than ever, business fleets need to run as efficiently as possible..



IP PBX

Fleet Mgt.

Real Time Loc. ▶

Digital Signage

Digital Boards

SMS Gateways

Building Energy



Together, Ekahau Vision™ software and Ekahau Wi-Fi tags reveal business intelligence with the power to transform your organization. Use your existing Wi-Fi network (WLAN) to gain real-time visibility into the assets, people and workflows that drive business with our innovative RFID-over-Wi-Fi™ (Real-Time Location System or RTLS) platform.

Gain visibility into the assets, people and workflows that drive business decisions with the Ekahau Vision™ location analytics and business intelligence platform.



Manufacturing-Mining-Health-Engineering



Authorized Resellers



Training-Support-Implementation

The Ekahau RTLS (RFID-over-Wi-Fi™) solution offers facility-wide location visibility that reveals business intelligence and enables workflow automation.



IP PBX
 Fleet Mgt.
 Real Time Loc.
 Digital Signage ▶
 Digital Boards
 SMS Gateways
 Building Energy



Digital Signage Solutions



DIGITAL SIGNAGE is all about content presentation that replaces static signs. Digital Signage is used to inform or advertise. The content in the digital signage is dynamic and are managed from a central location through a web interface.

Digital signage utilizing technologies such as LCD, LED, plasma displays, or projected images to display content can be implemented in both public and private environments, including Retail Stores, Hotels, and Restaurants, Hospitals, Healthcare centers and corporate buildings, amongst other locations.



Banking-Telcos-Health-Retail



Authorized Resellers



Training-Support-Implementation

Digital Signage serves the purpose of Public or Internal Information Board, Menu, Advertising, Brand Building and enhancing customer experience etc. Digital Signage displays are controlled by a Server, through the use of software the contents are designed and are pushed to these displays through Internet.



IP PBX

Fleet Mgt.

Real Time Loc.

Digital Signage

Digital Boards ▶

SMS Gateways

Building Energy



PROMETHEAN
LIGHTING THE FLAME OF LEARNING

ActivBoard interactive whiteboards and Promethean's teaching software provide the essential building blocks for any digitally connected classroom. Because each classroom is unique.

- Create an engaging and interactive learning experience.
- Create dynamic lessons with award-winning ActivInspire software, inject interactivity into Microsoft® PowerPoint® presentations with Promethean ActivOffice or use any program that runs on your PC or Mac on the ActivBoard for a rich and varied learning experience.
- Foster collaboration and involve multiple users at the same time with Promethean's latest range of intuitive touch and pen ActivBoards.



Banking-Telcos-Health-Education



Authorized Resellers



Training-Support-Implementation

Enliven teaching and learning with our range of interactive whiteboard systems. Designed to focus attention and provide a platform to boost the interactivity of your lessons.



IP PBX

Fleet Mgt.

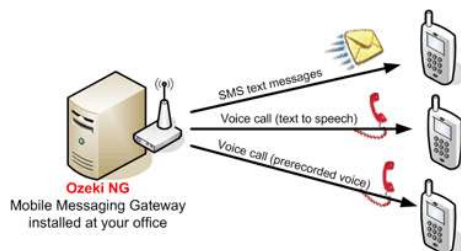
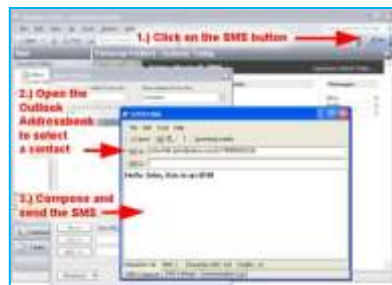
Real Time Loc.

Digital Signage

Digital Boards

SMS Gateways

Building Energy



OZEKI

Evolving Capabilities

Ozeki NG SMS Gateway is an excellent software for those who want to provide SMS services!

It can be used by independent SMS service providers (SMS Aggregators), Mobile network operators and SMS content providers. The platform offers everything needed to setup and operate mobile messaging services efficiently.

Advantages of SMS messaging:

- Less work time is required for communication
- The communication history is automatically logged
- The fastest way to reach somebody
- Polite, cost effective way to send information
- SMS notifications can be automated



All Industries



Authorized Resellers



Training-Support-Implementation

If you are an SMS service provider or an SMS content provider and you want to launch SMS services, such as SMS Voting, SMS quiz games, etc... or you simply want to become a reseller of SMS services, use Ozeki NG - SMS Gateway as your service platform!



IP PBX

Fleet Mgt.

Real Time Loc.

Digital Signage

Digital Boards

SMS Gateways

Building Energy ▶



Plugwise

Saving energy is easy with our practical energy monitoring and control systems. The Plugwise system allows you to see at a glance how much energy you consume at home, when and where. At any time of the day, wherever you are. On your Smartphone, tablet or computer.

Plugwise provides real-time insight into and control over your energy costs, for both electricity and gas, simply using your Smartphone or tablet. Never pay more at the end of the year, because you can take measures in time to reduce consumption. You can therefore check whether saving measures are effective and you never consume unnecessary energy.



All Industries



Authorized Resellers



Training-Support-Implementation

Plugwise is the platform that allows you to manage the energy consumption in your home, office and building. The strength of Plugwise is that our platform provides insight into your energy consumption, at device level..

For more information on products & services, please contact:



Infosense Ltd

IT Solutions and Services



+260 211 372723



contact@infosenseltd.com



<https://www.linkedin.com/company/infosense-ltd>



www.infosenseltd.blogspot.com

www.infosenseltd.com

HARDWARE





Data Centre ▶

Surveillance

Biometrics

H/W Infra


CANOVATE[®]
 G R O U P

Canovate Group of Companies is a manufacturer of industrial enclosures, server cabinets, fiber optic connectivity and data center products. Canovate Group product lines range from Fiber Optic Connectivity to Data Centers Solutions and from Rack Cabinets to Intelligent Power Distribution Units coupled with (B2B) and (B2C) sales.

Designs, Develops, Manufactures and Markets:

- Fibre Optic Connectivity based FTTX & Fiber Optic Transmission-Access Products
- Data Center & Data Center Cooling Products & Solutions
- Rack Cabinets, Enclosure Cabinets, Boxes & Accessories
- Outdoor Enclosures, Frames, Boxes & Accessories
- Structured Cabling Products, Accessories & Solutions
- PDUs and UPS



All Industries



Authorized Resellers



Support-Installation

In today's and future datacenter trends, the most important factors to be considered are power distribution, cooling and cable management on rack level. Efficiently engineered rack mounting capabilities and capacity become most critical feature to optimize utilization of available space.



Data Centre

Surveillance ▶

Biometrics

H/W Infra

**SONY**  **BOSCH**

Infosense offers a comprehensive range of surveillance cameras, and many other specialty CCTV cameras. We offer security camera options in a variety of form factors, both analog and network IP, in order to meet your surveillance needs and budget. Find the CCTV cameras that are perfect for your video surveillance needs.

We are committed to the installation of open IP video security systems coupled with an unparalleled level of customer service and support. From an expanded selection of IP security cameras and video management systems to full HD displays, traditional surveillance technologies, accessories and more,



All Industries



Authorized Resellers



Support-Installation

If you are concerned about potential break-ins, vandalism or other property damage, or have recently experienced an event, security cameras can help provide peace of mind through video monitoring. We provide a wide range of camera solutions from basic inexpensive indoor-cameras, through high-end cameras.



Data Centre

Surveillance

Biometrics

H/W Infra



VIRDI

Offering a higher level of convenience and security than other access control systems, our VIRDI Series has become the most popular access control system and Time/Attendance system for national organizations and private companies. Today, UnionCommunity is the leading company in fingerprint recognition access control systems. Furthermore, UnionCommunity is growing into a global company, exporting the VIRDI Series to about 80 countries in Worldwide.

VIRDI People Count System is used for counting the visitor traffic in department stores, shopping malls, stadiums, exhibitions etc. The data is used to analyze marketing programs and can be used to assist with scheduling employees based on visitor traffic



All Industries



Authorized Resellers



Support-Installation

The ViRDI Series that began with ViRDI 100N in 2000 has become the best brand in fingerprint recognition products with lineups of products in access controller, door locks, fingerprint register, mouse, etc based on the past nine years of constant research and development.



NetApp™



All Industries



Authorized Resellers



Support-Installation

We provide a series of well-know hardware equipment and IT infrastructure software from international vendors via our Africa Distribution Channel.